



Honey Bee Cottage 85 Brookhouse Hill, Fulwood, Sheffield S10 3TE



Lettings

Honey Bee Cottage 85

Fulwood

Per Calendar Month

£1,500 Per Calendar

A rare opportunity has arisen to rent this beautifully renovated 4-bedroom stone-built semi-detached cottage, located in a highly sought-after residential area. The property enjoys excellent transport links to the city centre, universities, and hospitals, while the scenic Mayfield Valley is within easy walking distance.

Inside, the cottage benefits from gas central heating and well-planned living spaces. There is an open-plan kitchen/diner equipped with a dishwasher, under-counter fridge, and washer/dryer, a comfortable sitting room featuring a charming fireplace, and a cosy snug with a wood-burning stove that opens onto the rear garden.

The accommodation includes a master double bedroom with built-in wardrobes, two further double bedrooms, a versatile single bedroom or study, and a family bathroom with a three-piece suite and shower over the bath.

Externally, the property offers a generous tiered garden and on-street parking. The property is offered UNFURNISHED on a 12-month initial tenancy. Please note, no smokers or students are permitted. Energy Efficiency Rating E.



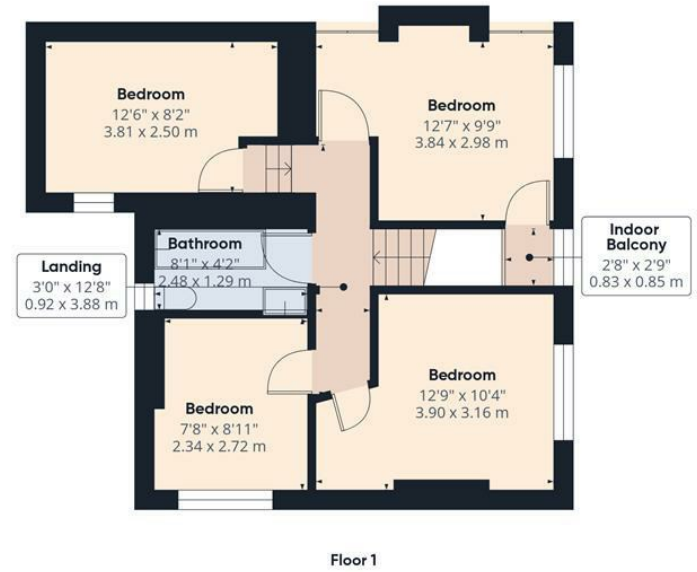
- FMS







Approximate total area^m
1124 ft²
104.5 m²



(1) Excluding balconies and terraces

Calculations reference the RICS IPMS 3C standard. Measurements are approximate and not to scale. This floor plan is intended for illustration only.

GIRAFFE360

While we endeavour to make our sales particulars fair, accurate and reliable, they are only a general guide to the property and, accordingly, if there is any point, which is of particular importance to you, please contact the relevant office. The Agents have not tested any apparatus, equipment, fittings or services and so cannot verify they are in working order. The buyer is advised to obtain verification. Please note all the measurement details are approximate and should not be relied upon as exact. All plans, floor plans and maps are for guidance purposes only and are not to scale. Under no circumstances should they be relied upon as exact or for use in planning carpets and other such fixtures, fittings or furnishings. YOUR HOME IS AT RISK IF YOU DO NOT KEEP UP REPAYMENTS ON A MORTGAGE OR OTHER LOAN SECURED ON IT. 'A Life Assurance policy may be requested.' 'Written Quotations of credit terms available on request.'

Banner Cross
T: 0114 268 3241
E: bannercross@saxtonmee.co.uk
www.saxtonmee.co.uk

Hathersage
T: 01433 650009
E: hathersage@saxtonmee.co.uk

Bakewell
T: 01629 815307
E: bakewell@saxtonmee.co.uk

Matlock
T: 01629 828250
E: matlock@saxtonmee.co.uk

